

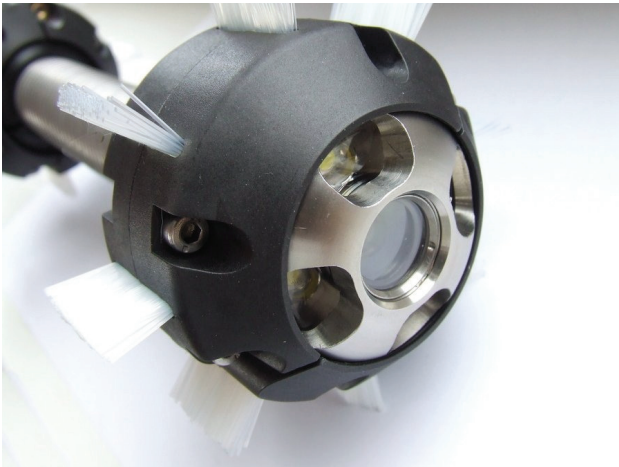
QUICK START GUIDE



1) Slot Power Cell into frame and push upwards to lock in place



2) Fit camera to Rod Termination



3) Fit Brush Skid set



4) Switch Unit ON

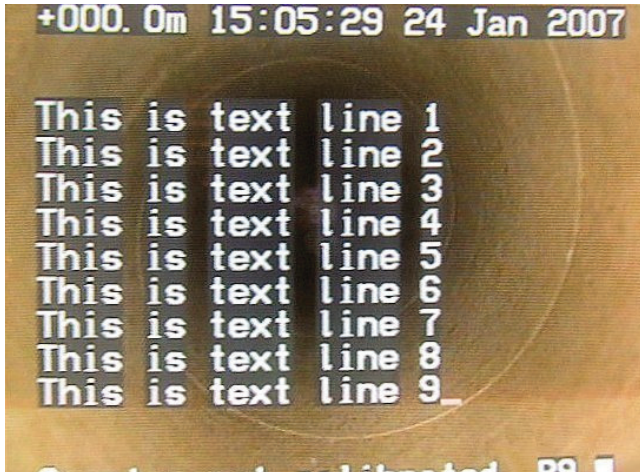


5) Press the Rod Counter button until the display shows 'Counter Calibrated'

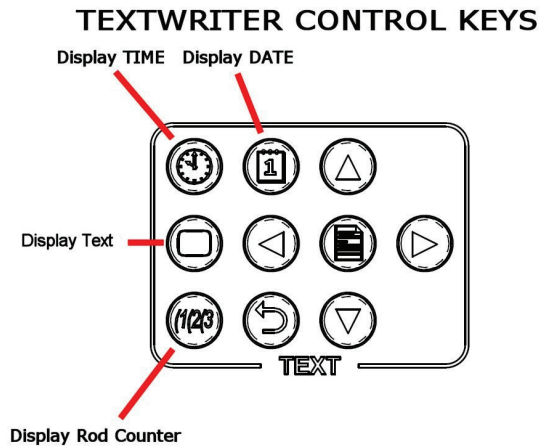


6) Adjust the brake to supply a small amount of friction. You are now ready for surveying

QUICK START GUIDE+TEXTWRITER + DVR



1) The Textwriter starts with the Rod Counter, Time & Date and the Text from Page 1 displayed



2) Use the keys shown here to hide or display the Rod Counter, Time & Date and the Text



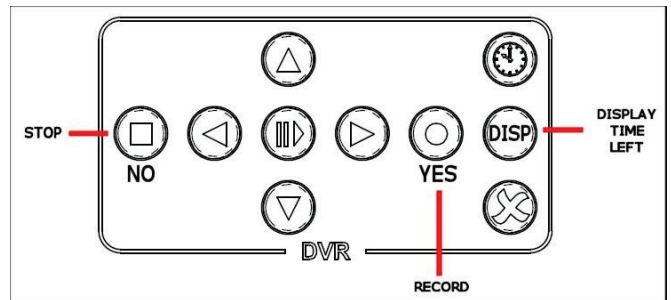
3) Wait for the Status LED to show that the DVR is ready



4) Remove the CD card cover by pulling the lanyard upwards and then away from the unit



5) Fit CF card as shown and replace the cover



6) When you are ready, press the RECORD key to start recording. When finished press STOP