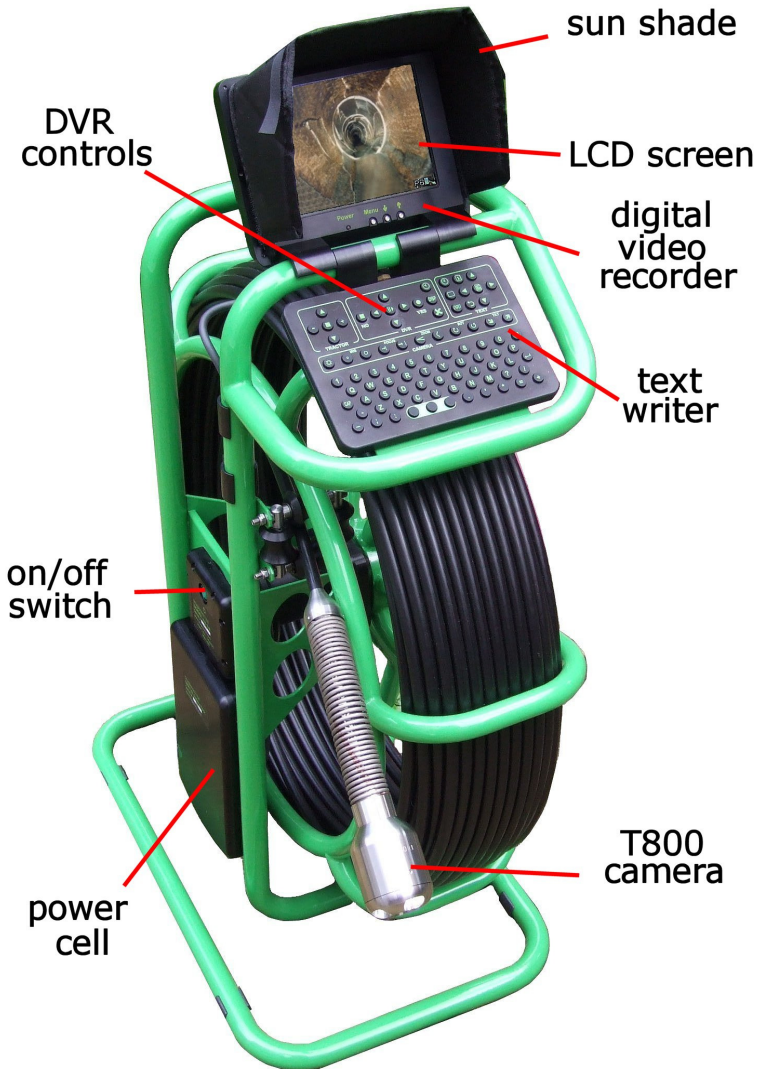




## OPERATING INSTRUCTIONS—T804 SYSTEM



Software Version 4 and above changes are shown in **bold text**



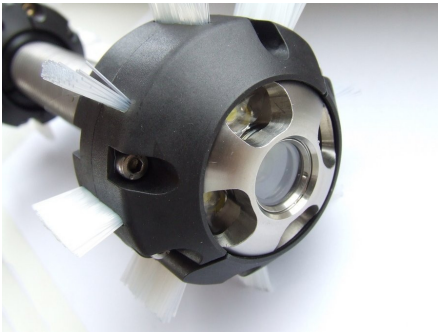
# QUICK START GUIDE



1) Slot Power Cell into frame and push upwards to lock in place



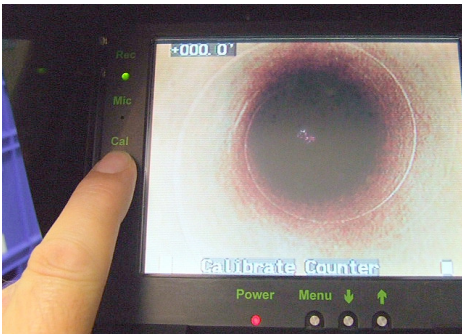
2) Fit camera to Rod Termination



3) Fit Brush Skid set



4) Switch Unit ON

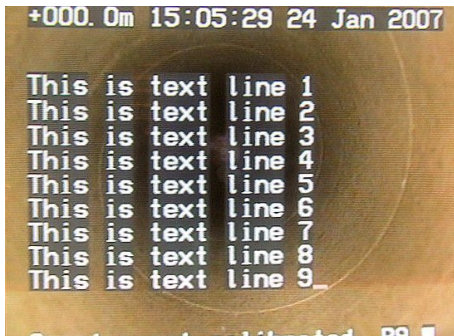


5) Press the Rod Counter button until the display shows 'Counter Calibrated'  
**Not required on SW V4 or above**



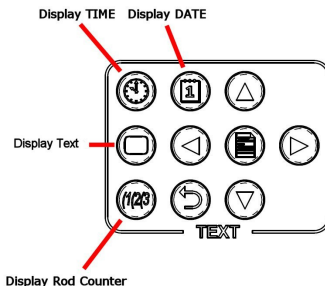
6) Adjust the brake to supply a small amount of friction. You are now ready for surveying

# QUICK START GUIDE+TEXTWRITER + DVR



1) The Textwriter starts with the Rod Counter, Time & Date and the Text from Page 1 displayed

## TEXTWRITER CONTROL KEYS



2) Use the keys shown here to hide or display the Rod Counter, Time & Date and the Text



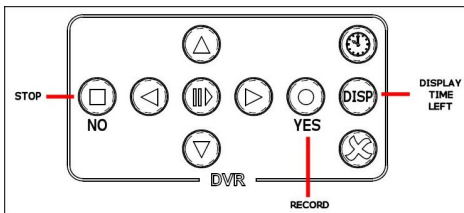
3) Wait for the Status LED to show that the DVR is ready  
**'DVR READY' shown on-screen**



4) Remove the CD card cover by pulling the lanyard upwards and then away from the unit



5) Fit CF card as shown and replace the cover



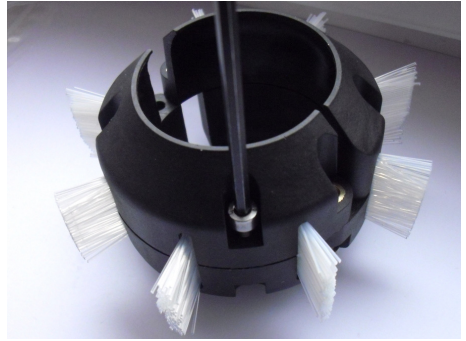
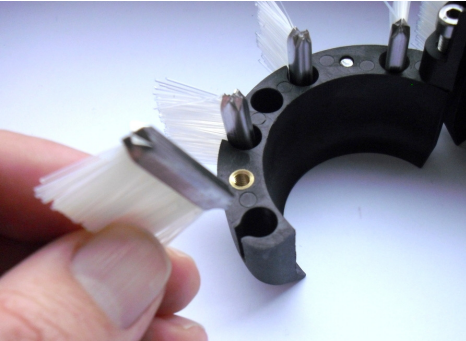
6) When you are ready, press the RECORD key to start recording. When finished press STOP  
**S/W V4: DVR RECORD shown on-screen and DVR RECORD OK if recording successful**

# FITTING BRUSH SKID SET

## Fitting Brush Skids

***The T800 and T812 must always be used with the full skid set***, whether or not the brushes are fitted. Using the system without skids may damage the camera.

The Troglotech skids can be adjusted from 3" (no brushes fitted), through 4" to 6" by selecting from the two brush sizes.



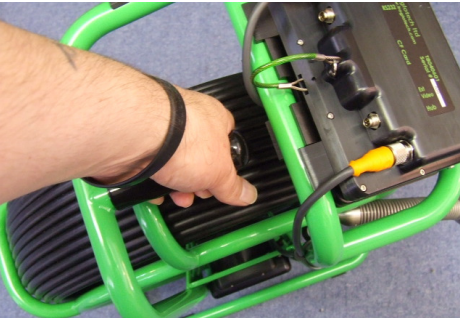
# END OF DAY PROCEDURE



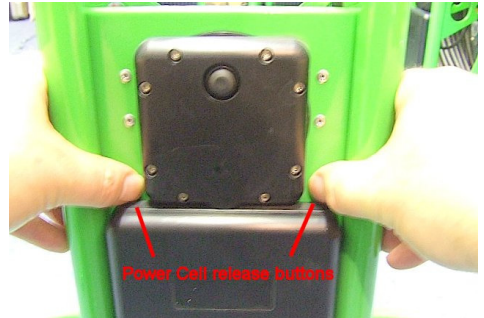
1) Switch unit OFF



2) Fold the sunshade flat, swivel Control Unit flat against keyboard



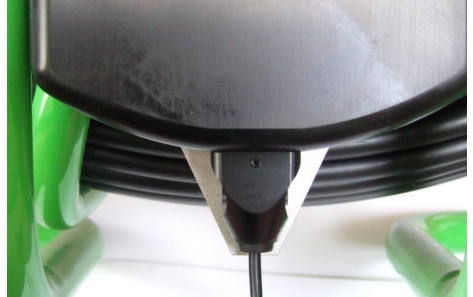
3) Fully apply the brake. The T804 is ready for transportation



4) Remove Power Cell by pressing both buttons and lowering the Power Cell



5) Connect the Mains Charger. Charging will take 4—6 Hours.



6) The Power Cell can be charged whilst fitted to the frame if preferred  
DO NOT OPERATE DURING CHARGE

# USING AN EXTERNAL VIDEO RECORDER

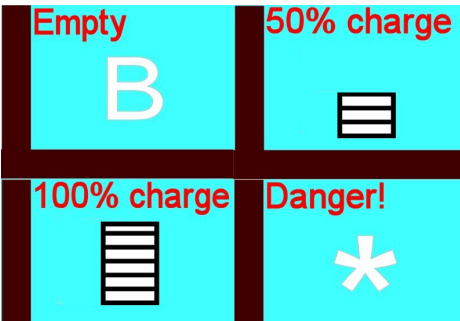


Connect the optional External Video Lead as shown here. Use the cable clips to hold to frame



Connect to external recorder. The T804 will select video from the recorder automatically

## POWER

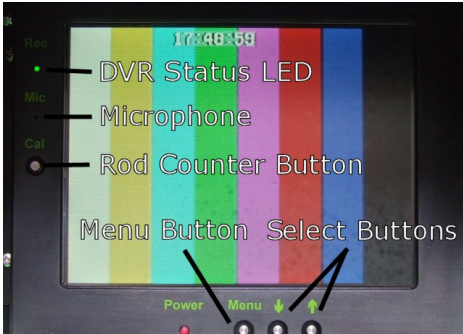


The T804 has an On-Screen display on all models to show the current Power Cell charge. The display will inform you if charging is required by flashing the 'B' symbol. This symbol will also be shown during recording if charging is required. The T804 can be powered by the optional 12V lead from a vehicle cigar socket. If the '\*' symbol appears the voltage is too high and may cause damage, disconnect immediately



When using the optional 12V lead the Power Cell will be charged at the same time as the T804 is operated. The rate of charge is dependant on the vehicle's battery condition, the Power Cell has a charge processor that will not allow the T804 to completely drain the vehicle battery. Full charge of the Power Cell from a 12V supply requires that the engine is running. We recommend the Mains Charger is used over-night for a complete charge.

# CONTROL UNIT DISPLAY



The LCD brightness, contrast and colour can be adjusted using the 'Menu' and 'Select' buttons



Brightness, Contrast and Colour can be adjusted to suit the conditions.

# SIDE OPERATION



1) Disconnect both cables, remove Control Unit from frame



2) Remove Keyboard from frame

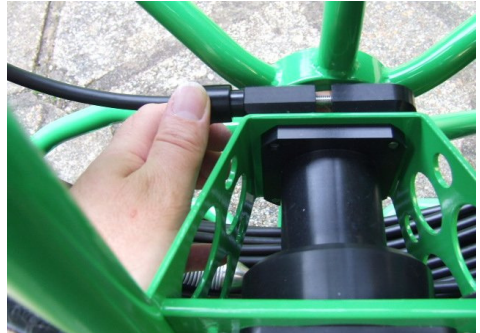
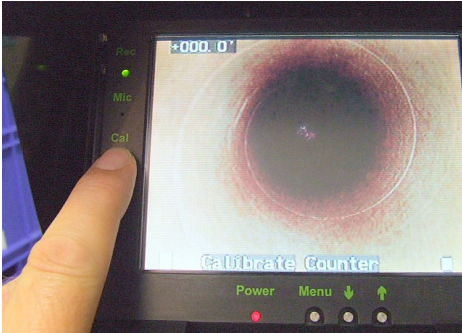


3) Lay the T804 on its side, fit Keyboard and then Control unit above the Hub



4) Connect Keyboard lead and Link Cable, use the clips to position Link Cable safely. Ready for operation.

# USING THE ROD COUNTER



After the T804 is switched on the Rod Counter requires calibration. This is a simple process. Return all rod to the coiler so that the camera termination is against the Rod Guide. Press the Rod Counter Button for 3 seconds and the calibration message will change from 'Calibrate Counter' to 'Counter calibrated'. **Calibration is NOT required on SW Version 4 or above**

The Rod Counter can be operated in Imperial (feet and 10ths of feet) or Metric mode (Metres and 10ths of Metres). To switch between the two modes press the 'C' key when the Textwriter is in VIEW mode, the display will change from (') - Imperial to (m) Metric.

If a relative measurement needs to be made between two points during a survey, press the Rod Counter button for less than 2 seconds. This will zero the counter, The Rod Counter will now count up or down from the point where the button was pressed to give a relative measurement. This does not affect the calibration as long as the button is pressed for less than 2 seconds

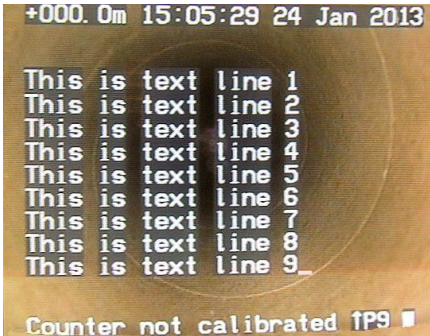
**Making accurate measurements.** As the Rod Counter relies on the rotation of the coiler it is important that the coiler brake is set correctly. When letting Rod out from the T804, the coiler may not rotate freely if the brake is set too fiercely. Ensure that the brake is set so that the coiler allows rod to be removed smoothly but does not allow the coiler to free wheel. Layering the rod neatly on the coiler increases the accuracy and is always good practice.

Measurements will not be accurate if the calibration routine is performed when the camera termination is not next to the Rod Guide. This does not have to be critically accurate; a leeway of a few inches is acceptable.

**Version 4 software automatically calibrates the counter and allows the counter to count in reverse if the T804 is switched ON when the rod is already extended - previous versions will not count in reverse in this situation**

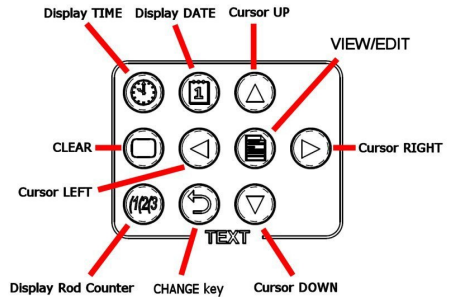


# USING THE TEXTWRITER-BASICS

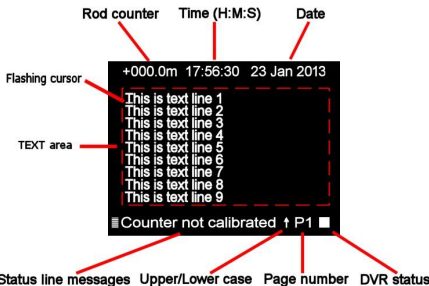


The Textwriter starts with the Rod Counter, Time & Date and the Text from Page 1 displayed

## TEXTWRITER CONTROL KEYS



Use the keys shown here to hide or display the Rod Counter, Time & Date and the Text



The 'Status line messages' area is used for giving the operator information such as 'Calibrate Counter' and 'Counter Calibrated'. This area is also used to send messages to the operator when using the Text Writer.

The 'Rod Counter', 'Time' and 'Date' can be displayed or hidden using the keys. These toggle the display.



The position of these displays is fixed and cannot be altered, they always appear on the top line in the same order.

The VIEW/EDIT key is used when Text needs to be altered, this button toggles between EDIT and VIEW modes. The Text can be cleared from the screen by using the CLEAR button, this toggles between Text and No Text modes.


When the Text Writer is in **EDIT mode** the 'Upper case/Lower case' symbol appears at the bottom of the screen next to the Page number and the cursor will flash in the TEXT area. When the Text Writer is in the **VIEW mode** the 'Upper case/Lower case' symbol will disappear and the cursor will not be shown in the TEXT area. The picture above shows that the Text Writer is in EDIT mode. If the Text Writer was in VIEW mode the 'Upper/Lower case' arrow would not be shown. **V4 only -The lower status line will show 'Textwriter VIEW mode' and 'Textwriter EDIT mode'**

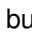
# USING THE TEXTWRITER-EDITING

There are 9 pages that are available to display text. The pages are useful for storing text that is often used such as your Companies Name and Address. To display a certain page of text put the Text Writer in VIEW mode (Upper/Lower case symbol NOT displayed). **Press keys 1 through 9 to display that page**, or:

Pressing the  button will increase the page number and display that page. Pressing the  button will decrease the page number and display that page.


Both buttons loop the page number, from 9 to 1 and from 1 to 9 respectively.

**If no text needs to be displayed** press the 'CLEAR'  button, this will remove the text from the screen (but will not delete it from memory), it will also remove the 'Upper/Lower case' indicator and the Page Number display.


Pressing the 'CLEAR'  button again will display the text contained on the current page and the Page Number display on the bottom of the screen. The Text Writer will be in VIEW mode.

To edit text first choose a PAGE you want to edit as explained in the previous section. Put the Text Writer in 'EDIT' mode as explained above, the 'Upper/Lower case symbol will be displayed in EDIT mode and the Page number will be displayed to the right of the symbol. You are ready to edit text.

Pressing any of the alphanumeric keys will now write to the screen. Each letter you type is automatically saved so if power is removed you will not lose any work.


If you want to change to lower case press the 'CAP'  button once.

To create spaces press the 'SPACE' button.   

If you want to jump to the next line press the 'ENTER' button. 


Use the    and  cursor buttons to move the cursor around the screen.



The cursor will jump from bottom to top, left to right and visa-versa when the extremes of the TEXT area are reached.


Press the 'EDIT'  key to **remove the cursor from the screen** when you have finished typing to put the Text Writer in VIEW mode.

**NOTE SW Version 4 will show messages in the lower status line to indicate Textwriter EDIT and VIEW modes**

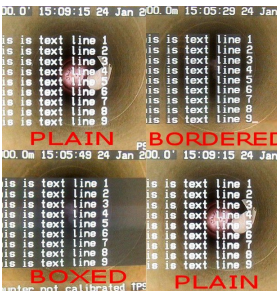
# TEXTWRITER-VARIOUS FUNCTIONS

**To delete single characters**, for instance when a mistake is made while typing, press the 'DELETE'  key while in EDIT mode. The DELETE key will delete the character that is displayed above the flashing cursor. As the cursor moves when a character is typed you will have to press the DELETE key twice, once to move the cursor back to the character and once again to delete that character. Each press of the DELETE key deletes the character above the cursor AND moves the cursor back by one position. Use the cursor buttons to move the cursor around the screen to select any character that needs deleting.





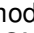
Whole pages of text can be deleted, for instance when a new survey is started and the page contains old information. To **delete a whole page of text** put the Text Writer in VIEW mode (no 'Upper/Lower case' arrow displayed) and use the   buttons or 1-9 keys to display the page of text you want to delete.


Then press the  key once. The lower part of the screen will now display the message 'DELETE PAGE? Y or N'. Pressing the 'Y' key will now delete the current page of text. Pressing any other key will NOT delete the page of text.



## Display Modes:




The Text Writer can display the TEXT area in three different modes as shown in the first three pictures.

To switch between the display modes, select **VIEW mode** using the 'EDIT' key and then use the   keys to switch between the three  modes. The display   modes loop between **PLAIN**, **BORDERED**, **BOXED** and then back to **PLAIN** again

**To set the Time and Date** press the 'CHANGE'  key once.

The Hours display will turn black and the TEXT area will be cleared. The HOURS value can now be changed, use the   buttons to increase or decrease the hours value.


Once the HOURS are correct press the 'CHANGE'  key once, this locks the new value. The MINUTES value can now be changed.

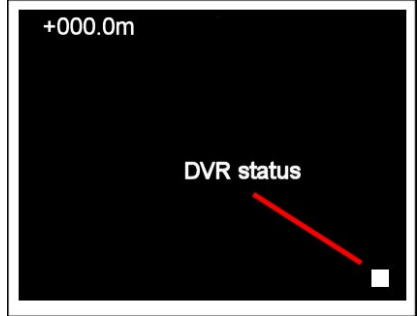
Use the same procedure for MINUTES, DAYS, MONTHS and YEARS.

A final press of the 'CHANGE'  key will display the text again.

**NOTE SW Version 4 will show 'Time and Date Edit' during clock setting**

# DVR-BASIC FUNCTIONS

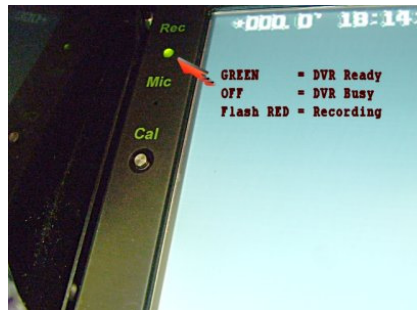
Allow the T804 to initialize so that the DVR status indicator seen on the T804 display shows the 'READY' symbol  and the Status LED is GREEN:




**GREEN = DVR READY.** CF card can be removed or replaced, ready for operation.

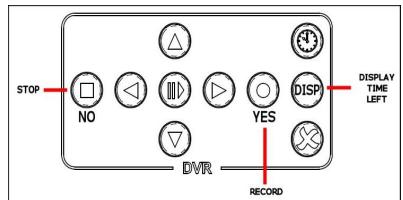
**OFF = DVR BUSY.** DVR is busy, do NOT remove CF card.

**FLASHING RED = RECORDING.** The LED will only flash if recording successfully, if the LED does not flash the CF card is full, missing or faulty.



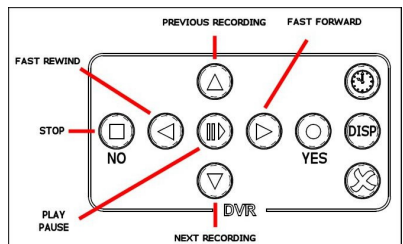
Use the 'Display Time Left' button to check that there is sufficient space left on the CF card for your survey

Press 'Record'  YES to start the recording. When you have finished recording, press 'Stop' to stop recording. Ensure that the Status LED is flashing RED while recording. If the LED does not flash RED then the CF card is incompatible OR the CF card is full.




Press 'Play' to playback the last recording. Use the 'Fast Forward' and 'Fast Rewind' buttons if required.

Whilst playing you can use the 'Previous Recording' and 'Next Recording' buttons to play any other recordings that are already on the CF card. Press 'Stop' to stop playing



# DVR-PLAYING RECORDINGS

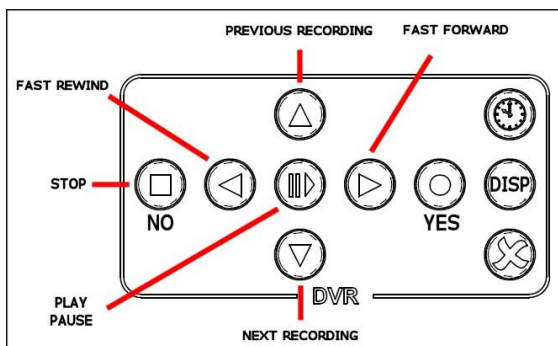
Playing recordings on the T804 DVR is extremely simple:

Ensure that the T804 DVR is 'Ready' as shown by the  symbol in the 'DVR status display' and the Status LED is GREEN.

**Press the 'Play' button.** After a short delay the T804 will play the last recording that was made.

This is useful for ensuring the last recording was acceptable.

The 'Fast Forward' and 'Fast Rewind' buttons can be used to quickly scan through the recording. When the end of the recording is reached the first recording on the CF card will be played.



When any of the above buttons are pressed the display will show the DVR MODE:



You can play the previous recording by pressing the 'Previous Recording' button

You can play the next recording by pressing the 'Next Recording' button


You can pause the recording by pressing the 'Play' button, press again to Play

**Press 'STOP' to return to the live picture.**

**NOTE: SW Version 4 and above will show messages at the bottom of the screen to indicate the DVR mode of operation. In addition, if the recording is unsuccessful a warning will be shown permanently on the lower status line until 'STOP' is pressed**

# DVR-RECORDING

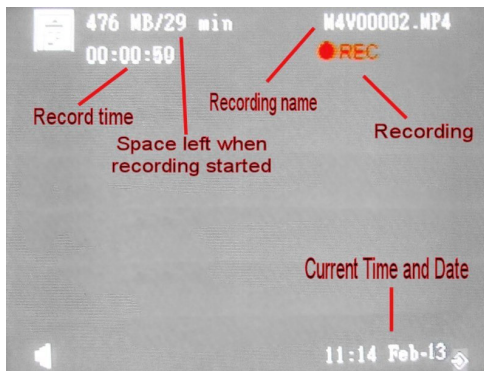
Recording using the T804 DVR is very simple.

Ensure that the T804 DVR is 'Ready' as shown by the  symbol in the 'DVR status display' and the Status LED is GREEN.

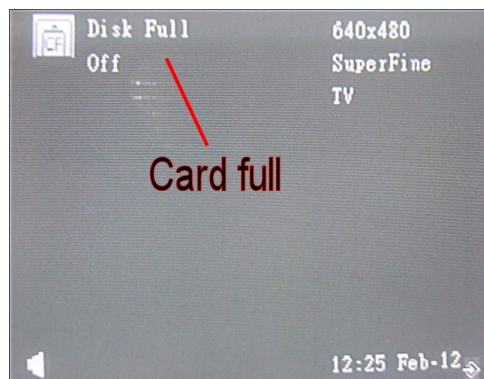
Press the 'Record' button to start recording.



The DVR status will show 'Record mode' momentarily followed by the 'Busy' symbol. The DVR will now check CF card space and will momentarily display the screen shown here. After a few seconds the live picture will return, the record symbol, page number and battery-level meter will disappear and will not be recorded unless the Power Cell requires recharging. In this situation a flashing 'B' will appear in the picture. The Status LED will start FLASHING RED



If there was no space left on the CF card the screen will show this display momentarily. Replace the CF card with a new card. If the recordings on the CF card are not required and have been copied to DVD, CD or onto a computer then you can FORMAT the CF card as described further in this manual.




**You can record voice messages while recording.** By default, the microphone is switched OFF. **To switch the**

**microphone ON press the 'M' key** when the Textwriter is in VIEW mode.

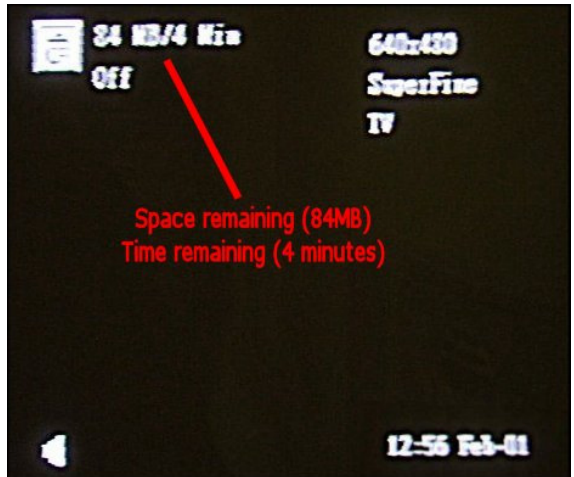
Pressing the 'M' key again switches OFF the microphone. The microphone status is shown at the bottom of the screen when the 'M' key is pressed (see bottom of page) . Record messages by speaking close to the T804 monitor. There is a microphone built into the housing and this will record any voice messages that are announced close to the monitor.

Microphone OFF =  Microphone ON = 

# DVR-CF CARD COMPATABILITY

Before starting a recording it is good practice to check how much space is left on the CF card. When the 'DVR status' shows 'Ready', press  the 'DISP' button. The 'DVR status' will show 'Busy' for a time and then the display as shown here will be displayed. The example shown indicates that there is 4 minutes of recording time left on the CF card (84MB).

After 3 seconds the DVR will return to the 'Ready' state



CF cards are readily available in various storage sizes.

A 32GB card will store 32 hours of recordings

A 16GB card will store 16 hours of recordings

An 8MB card will store 8 hours of recordings

Troglotech recommends using 8GB cards with at least a '80x' speed rating such as the Lexar Professional Range as shown to the right. Cards with a lower speed rating will not allow recordings to be made. Do not use cards with a capacity greater than 32GB as these are generally too slow to operate correctly.

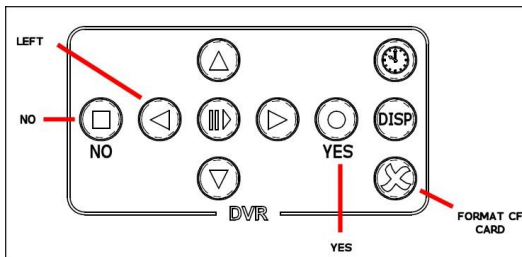
***Please note that Windows 98 machines will accept a maximum of 2GB. If your PC runs Win98 please use 2GB cards.***




# DVR-CF CARD-ERASING-FORMATTING

CF cards can be reused almost indefinitely. Once the recordings have been transferred to a DVD or to a computer, the CF card can be entirely erased (formatted).

**To erase a complete CF card** (better known as formatting) follow this procedure:




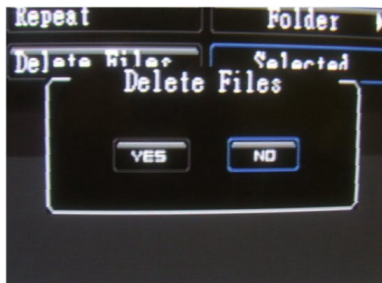
Ensure that the T804 DVR is 'Ready' as shown by the symbol in the 'DVR status display'.



Press the FORMAT  button. After a short while the T804 screen will show the picture pictured to the right. Press the 'Left' button to highlight the 'YES' box and then press the 'YES' button. After Formatting the DVR will return to 'Ready', this may take a few minutes depending on the size and speed of the CF card.



Once the CF card is Formatted it will be completely empty and you can record as though this was a brand new CF card. The card will not be damaged in any way by Formatting and this can be performed as many times as required.

**To Erase a single recording**, first PLAY the recording you want to delete (see 'DVR-PLAYING RECORDINGS'), while the recording is playing press the FORMAT  button. The screen will change to that shown here. Press the 'Left' button to highlight the 'YES' box and then press the 'YES' button. The recording that was playing will be deleted and the next recording (if one is present on the card) will start playing.




You can now press the STOP  button to return to the READY state or you can press the FORMAT  button to erase further recordings.

**NOTE: SW Version 4 and above will show messages at the bottom of the screen to indicate the DVR mode of operation. In addition, if the recording is unsuccessful a warning will be shown permanently on the lower status line until 'STOP' is pressed**




# DVR-SETTING TIME AND DATE

The Time and Date are automatically updated and in normal use should not need changing, the clock-calendar system is aware of Leap Years and will adjust the date accordingly. However, some Countries employ Daylight Saving, in which case the Time will need to be changed and as the T804 is shipped worldwide, the date may need changing as well. The DVR clock is used to 'Time Stamp' the recordings so that it is a simple case of matching recordings with the time and date that the survey was made.

Ensure that the T804 DVR is 'Ready' as shown by the  symbol in the 'DVR status display' and the Status LED is GREEN.

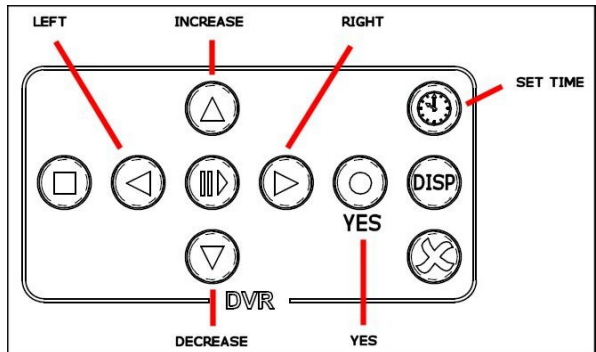
To set the Time and Date press the 'Set Time' button. The screen will show the display as pictured here.

The MONTHS display will now be highlighted in yellow, use the  buttons to increase or decrease the month's value.



Once the MONTHS are correct press the RIGHT button, this locks the new value. The DAYS display will now be highlighted in yellow. Use the same procedure for DAYS and YEARS.

When you are happy that the DATE is set correctly, press the YES button, this will now highlight the HOURS figure in the box below. Set the TIME using the same routine as that used for the DATE.



When you are happy that the TIME is set correctly, press the YES button. This will return the DVR to the 'Ready' state

# DVR-PLAYING VIDEO ON A COMPUTER

The video files created by the T804 are in the latest MPEG4 format. **All modern computers will play the video without any need to download anything.** For older computers: For both Windows and Mac users the best video-player to use is 'Quick Time Player' by Apple. This player supports the modern MPEG4 files without the need to download any extra Codec's. The Quick Time Player for Windows can be downloaded for free from:

<http://www.apple.com/quicktime/win.html>

All Mac computers are delivered with the Quick Time Player already installed. If you need to update your Mac computer go to:

<http://www.apple.com/quicktime>

Windows Vista does not support the Apple Quick Time Player correctly, There are many ways to play MPEG4 files on Windows Vista, initially, download our universal MPEG4 player from here:

<http://www.troglotech-products.com/software/MP4/MP4.zip>

There are also other options for playing MPEG4 files in Windows Media Player, the details can be found here:

[http://www.afterdawn.com/guides/archive/how\\_to\\_play\\_mp4\\_files.cfm](http://www.afterdawn.com/guides/archive/how_to_play_mp4_files.cfm)

## Moving the video files to your computer

Many Laptop computers are supplied with a CF card-slot. In this situation the CF card can be simply copied to a new folder on your machine. The card is usually seen as a removable drive and will contain a number of folders. The Video Files are contained in the folder: 'Drive:\MP\_ROOT\TV' where 'Drive:' is the letter allocated to the CF card by your computer. The Video Files all have the extension '.MP4', the other files in the folder with the extension '.THM' do not need to be copied and are used by the T804 DVR only to track the Video Files.

**If your PC or Laptop does not have a CF card slot** then the use of a Card Reader is recommended. This will be seen as an additional drive.

Please contact your Distributor for advice in your area

# MAINTAINANCE

## MAINTAINANCE—T804 SYSTEM

When the Rod is returned to the coiler ensure that most debris is removed, although the T804 is fully sealed to IP 67 the use of Jet Washers is strictly prohibited as the pressure can exceed acceptable limits. Keeping the Rod clean as it is returned to the coiler is the preferable method of keeping the T804 in good condition.

After each week's operation ensure that the Rod Guide is clear of debris, clean if necessary using warm water and a paintbrush to get into the inaccessible parts. Wipe down the enclosures with warm water and a mild detergent using a cloth. Perform cleaning operations with camera and accessories connected.

## MAINTAINANCE—T800 CAMERA

It is best practice to leave the camera and skids fitted to the T804 system. If you need to remove the camera ensure that the Termination is clean before removal. When replacing the camera ensure that the threads are clean and that the 'O' rings are well lubricated with Silicone Grease. Never use solvents (such as Ambersil) to clean the termination as this will damage the o-rings. Keep the windows clean with a damp cloth and a small brush to remove debris from the front guard.

The Lens Window is the only user-replaceable part on the T800 camera, although the surface is extremely hard it may become scratched over a period of time and this will affect the picture quality. The replacement requires the purchase of a Lens Window Kit which includes the Quartz window and the sealing 'O' ring. Before attempting the replacement ensure that the camera is perfectly clean and there is no debris in the window aperture. Please see the T800 User Manual for lens window replacement.

## MAINTAINANCE—T812 CAMERA

It is best practice to leave the camera and skids fitted to the T804 system. If you need to remove the camera ensure that the Termination is clean before removal. When replacing the camera ensure that the threads are clean and that the 'O' rings are well lubricated with Silicone Grease. Never use solvents (such as Ambersil) to clean the termination as this will damage the o-rings. Keep the windows clean with a damp cloth (microfiber cloths are best for this practice).

## REPAIRS/SERVICING

The T804 has no user serviceable parts. Please refer to your Distributor for repairs and service.



# OPERATING WITH NO TEXTWRITER

On T804 systems where a Text Writer is NOT fitted, the selection of Imperial and Metric units is performed by holding down the 'Cal' button while the unit is switched from OFF to ON. Keep the 'Cal' button pressed until the 'Troglotech Ltd' welcome screen is shown, the Units will now change from Imperial to Metric and visa-versa. The Units selection is remembered even when the unit is switched OFF



## ACCESSORIES

### T710 1" CAMERA AND 20M ROD

Extend the capabilities of your T804 system with the addition of the T710 1" camera and 20M (66 feet) of highly-flexible rod. This upgrade includes a smaller coiler cage that fits within the T804 coiler cage.

When a survey is required of small pipework, the T800 camera can be detached, and the free-end of the 20M rod can be connected to the termination. The 1" camera can now be passed through the rod-guide and the survey can begin. In some situations, the full 80M (262 feet) of rod can be utilised.

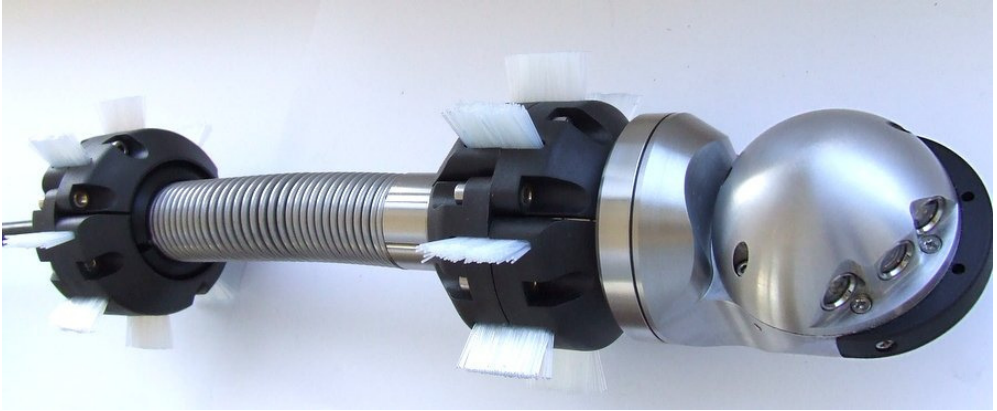
The T710 is the worlds most advanced 1" camera. We have utilised the very latest in CMOS sensor and LED technology to provide a camera that out-performs all 1" cameras and most larger cameras.

The rod is a new Troglotech design. It has a high resin-content fibreglass core that provides both flexibility and strength, the outer is highly wear-resistant and low-friction.



# ACCESSORIES

## T812 PAN AND TILT CAMERA



Troglotech are proud to announce the launch of the worlds most advanced Pan and Tilt camera, the T812. Most Pan and Tilt cameras fail to keep the picture upright when the head rotates, some larger cameras have auto-uprighting, but only the Troglotech T812 has 'Human Perspective View' which emulates the way a human would view a pipe.

The T812 continues our well-proven construction techniques and extraordinary picture clarity from our T800 cameras (over a thousand camera systems operating around the world). It can be fitted to our T804 pushrod system using the same skid sets as the body is the same 48mm diameter as the T800.

**Lighting:** We have custom LED's manufactured exclusively for Troglotech cameras. The output of the LED's on the T812 are equivalent to a Halogen light-source of 50W

**Ruggedness:** As always, the camera is constructed of Stainless Steel. It is fully waterproof to IP68

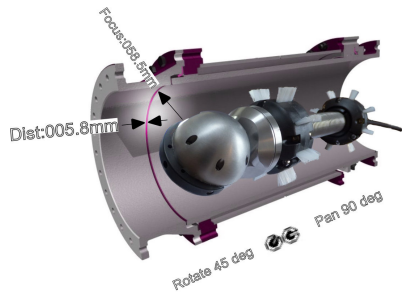
**Picture quality:** Patented 'Digital Clarity' high-definition sensor with electronic focus control (no moving parts)

**Intelligent viewing:** Along with 'Human Perspective View', the camera auto-centres and auto-focuses with a single key-press

# ACCESSORIES

## Digital Lens Measurements

When the T804 system is fitted with Troglotech's T812 Pan & Tilt camera measurements of any artefact such as a cracked pipe or debris can be accurately measured and the information stored on the flash card along with the video survey.



The measurement method is extremely easy and takes just a few seconds to provide accurate results.

- Accurate measurements
- No lasers
- Quick and simple method
- Results saved with video file on flash card
- No post-survey processing
- Available on all T804 with T812 Pan & Tilt

## Sondes

Troglotech produce in-line sondes for the T800, T812 and T710 cameras which can be utilised when operating with the Troglotech T804 digital pushrod system.

We produce sondes in all the standard frequencies:

**512Hz**

**640Hz**

**8.192KHz**

**32.768KHz (High Power version now available)**



Our powerful sondes allow you to accurately and reliably locate your T800 camera at depth. They are crystal-controlled and always give a powerful and precise signal to your requirements. They are compatible with most Locators.

# ACCESSORIES

## DC Lead:

To extend the operation time of the T804 system, the DC Lead can be used to both charge the power cell and operate the Troglprobe system at the same time. The DC Lead is 3 metres in length and has a cig-lighter plug to connect to a vehicle with a 12V battery system.



The DC lead is especially useful for recharging the Power Cell while travelling between inspections. Each hours charge while travelling can provide up to three hours operation time without the need for any generator or external power supply.

## Extra Power Cell:

If up to eight-hours operation duration is insufficient and a 12V supply is not available, an additional power cell can be supplied. The Troglprobe power cell uses advanced lithium ion cells to provide dependable energy and the machined-from-solid enclosure provides IP67 full waterproofing.

The T804 power cell is clipped to the system frame and can be released and replaced in seconds. There are no leads to connect, the power cell has a captive waterproof connector that automatically mates with the hub.

The power cell also contains battery-manager electronics to enable charging from a 12V DC source via the DC lead if mains electricity is not available. The Power Cell is exceptionally robust with an anodised finish.



## Text-writer upgrade:

Most Troglprobe systems are sold fully loaded with DVR and Text-writer, however, the Troglprobe can be sold as a 'Base System'. The 'Base System' has on-screen meterage but has no text-writer capabilities. The text-writer capabilities can be simply enabled by the addition of the T804 keyboard.



The keyboard is a machined-from-solid anodised assembly, fully waterproof to IP67 and simply snaps onto the T804 frame and connected to the Control Unit by a single waterproof connector. The keyboard assembly contains a full 9-page text-writer with clock-calendar to automatically display the time and date on-screen. The text-writer is fully Wincan-compatible.

# SPECIFICATION AND REQUIREMENTS

SYSTEM INPUT VOLTAGE	10.8V – 14.6V
FRAME CONSTRUCTION	Powder coated Steel
ENCLOSURE CONSTRUCTION	Machined-from-solid Aluminium, Hard Anodised
DIMENSIONS	540mm x 643mm x 302mm
PUSHROD	5-Conductor Epoxy Glass core
TEMPERATURE	-20°C to +85°C (storage) 0°C to 50°C (operating)
SYSTEM WEIGHT	17KG
STANDARD ROD LENGTH	61M (200 feet)
BASE UNIT ENVIRONMENTAL	IP 67
LCD	5.6" High resolution, High brightness
POWER CELL CAPACITY	9600mAH
POWER CONSUMPTION	1.3A @ 12V (15.6W)
MISSION TIME	6 – 8 Hours from a single charge of the Power Cell
VIDEO OUTPUT / INPUT	Auto – Switching, Buffered, 1V p-p into 75 Ohms

## ACCESSORIES

### WARNING

The T804 is a battery-operated system, never operate the T804 when connected to a mains supply. The mains charger must never be operated on-site and is for indoor use only. Failure to comply to this warning may endanger lives

DEALER INFORMATION